



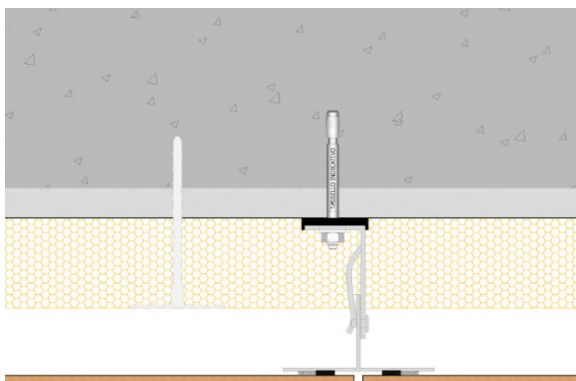
**CONCEALED SYSTEM
WITH STRUCTURAL
ADHESIVE.
THICK TILES
6 MM**

TECHNICAL SPECIFICATIONS

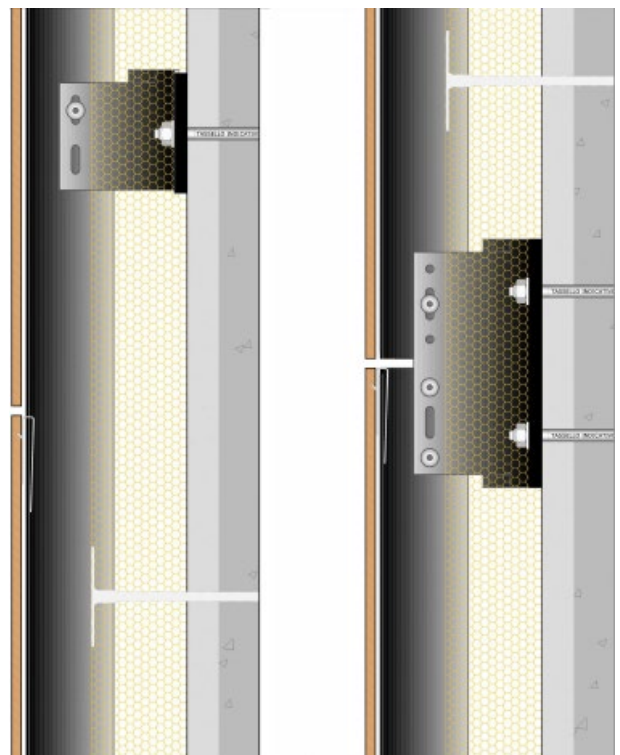
All Granitech ventilated facades are based on integrated systems comprising variable thickness porcelain tiles (we recommend safety mesh as itemized in UNI 11018:2003), insulating layer and aluminum structure. The structure consists of extruded profiles and brackets in 6000 series, 6060 aluminum alloy, in accordance with European standard UNI EN 573-3, T6 physical properties (UNI EN 515).

GHP ventilated facades consist of the following components:

- Thermal spacer in shaped polypropylene, to be positioned between the anchor bracket and the building wall.
- L-section anchor bracket, with longitudinal ridge, equipped with a spring created by bending the bracket itself.
- Suitable fixing for anchoring to the support.
- Black painted T-section uprights, the surface of the core features longitudinal ridges for fixing anchor brackets (where necessary they may be substituted for tubular square profiles).
- Aluminum or stainless steel rivets for fixing the uprights to the brackets.
- Due preparation of the surfaces of structural joint supports, in accordance with manufacturer's recommendations (ETAG 002 and EN 13022) aluminum or stainless steel, for fixing the uprights to the brackets.
- 6mm thick porcelain tiles. Suitably on the back, installed directly on the uprights with single component structural adhesive fixing, with continuous vertical joint or staggered vertical joints.



SEZIONE ORIZZONTALE



SEZIONE VERTICALE